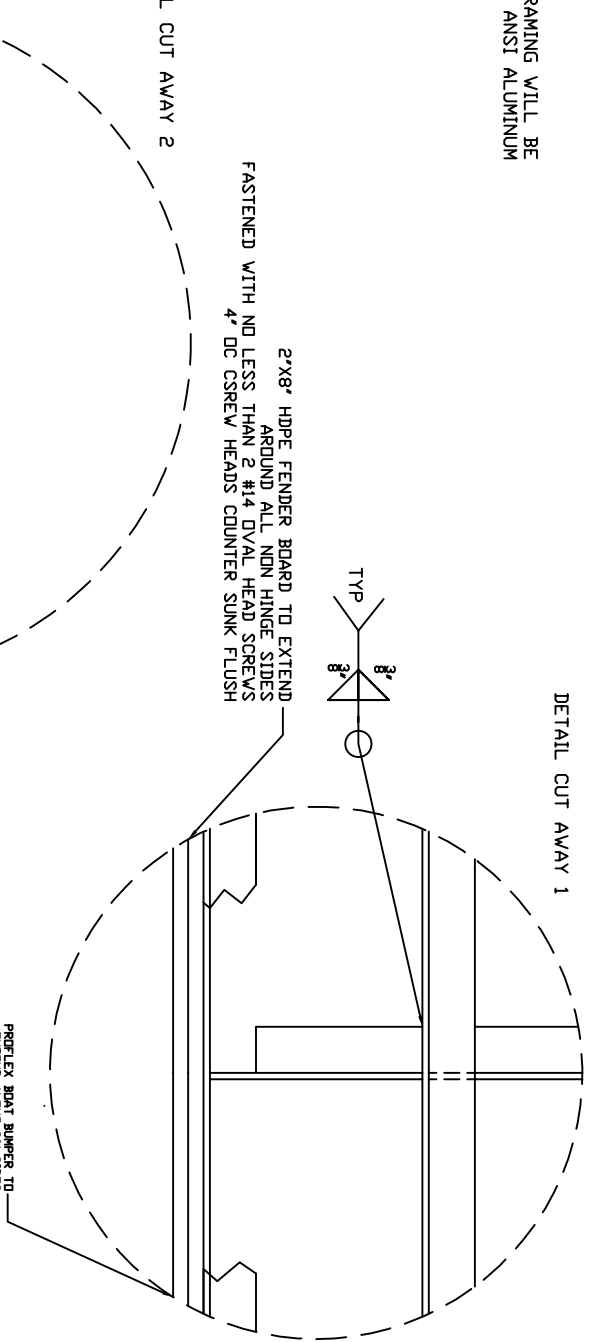


NOTE: ALL FRAMING WILL BE STANDARD 5" ANSI ALUMINUM CHANNEL

DETAIL CUT AWAY 1



2"x8" HDPE FENDER BOARD TO EXTEND AROUND ALL NON HINGE SIDES FASTENED WITH NO LESS THAN 2 #14 OVAL HEAD SCREWS 4' DC CSREW HEADS COUNTER SUNK FLUSH

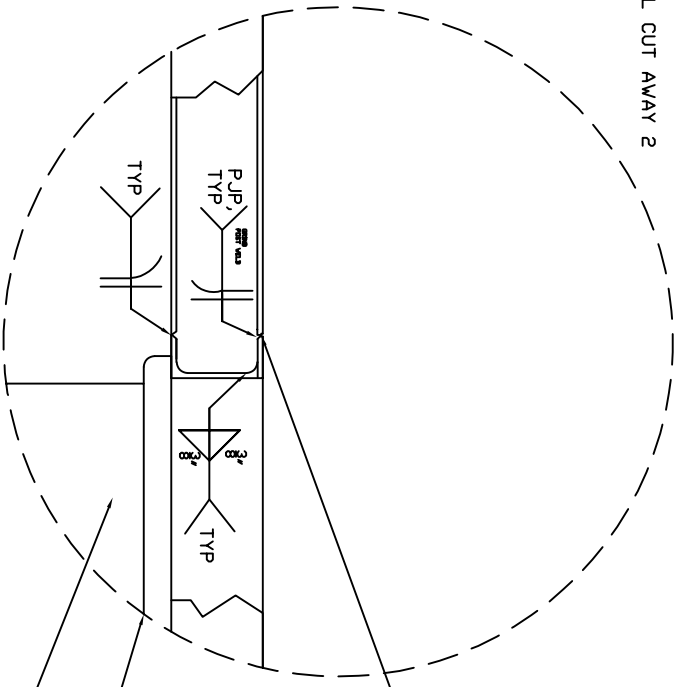
PROFLEX BOAT BUMPER TO EXTEND ALONG BOTH SIDES AND BE SECURED WITH SS BUMPER SCREWS AND WASHERS

SURFACE TO BE PREPARED PRE WELD BY AGENTIVE WIRE AND LIGHT APPLICATION OF HEAT NO MORE THAN 100 DEGREE F TYP

DRUMS TO BE FIXED TO FRAME POST WELD PREFERABLY ON SITE FOR EASE OF TRANSPORT.

FLOAT DRUM, 4X6X20" APPROXIMATELY 2000LB BUDYANCY

DETAIL CUT AWAY 2



General Notes

THIS DETAIL EXAMINES THE METHOD OF JOINERY TO TAKE PLACE. ALL WELD PROCEDURES WILL BE LAID OUT IN SUCH A WAY TO PREVENT UNNECESSARY HAZ AND WARPAGE. ALL NOTCHING AND SHAPING OF CHANNEL TO BE DONE BY A MECHANICAL METHOD, NOT BY PLASMA ARC. GAPS WILL BE KEPT TO A MINIMUM GROOVE DEPTH WILL BE 1/8" TYP. BECAUSE THE CHOICE OF MATERIAL IS IDENTICAL FOR BOTH SIZES OF FLOAT AND GANGWAYS THIS WILL BE THE ONLY WELD CALL OUT SECTION. ALL PROCEDURES, SHAPES AND STYLES WILL BE BASED OFF THIS SHEET.

No.	Revision/Issue	Date



REVISIONS OF DRAWING 1 & 2
 APPROVED: [Signature]
 DATE: [Blank]

Project	Sheet